

The De Montfort School Early Help Provision

Coronavirus Update

- Many of the services and referrals are still available at this time, however all are subject to change due to the restrictions caused by Covid and the demands on services and changes to provision.
- TDMS aims to ensure appropriate provision is in place when possible. It is not possible to know at this time which programmes will be available in this academic year and when they will become available.
- If lockdown is reinstated additional measures to safeguarding vulnerable students through school checks, monitoring and support will be put in place. Parents are also advised of support and provision through additional Safeguarding newsletters.
- Parents are also directed to [Worcestershire Here to Help](#) provision to support families during the Coronavirus emergency.

The De Montfort School Early Help Provision

At The De Montfort School we recognise the challenges that families face in bringing up children. There may be times when you need extra help and support. If this is the case please come and talk to us. There are many ways in which we can help as outlined in this offer of early help. The diagram shows the range of needs at different levels. We use this graduated approach to make sure we provide the best support for different families' individual situations.

Providing early help to our pupils and families at The De Montfort School means we are more effective in promoting support as soon as we can. Early help means providing support as soon as a problem emerges, at any point in a child's life, from Year 6 through to teenage years.



If a member of staff, parent/carer or member of the public thinks a child or young person is at immediate risk of significant harm they should contact the Family Front Door (FFD) – 01905 822 666 or in an emergency always call 999.

The De Montfort School

Early Help Provision

Key Personnel:

The Designated Safeguarding Lead (DSL) is: Mrs Fiona Lovecy

Contact details:

email: flovecy@tdms.worcs.sch.uk Telephone: 01386 442060

The Deputy DSLs are: Mrs Sara Wells and Mrs Sarah Green

Contact details:

email: swells@tdms.worcs.sch.uk and sgreen@tdms.worcs.sch.uk

Telephone: 01386 442060

The nominated safeguarding governor is: Mr Robert Walsh

Contact details:

email: rwalsh@tdms.worcs.sch.uk

The Headteacher is: Guy Nichols

Contact details:

email: gnichols@tdms.worcs.sch.uk Telephone: 01386 442060

The Chair of Governors is: Mrs Chris Grove

Contact details:

email: cgrove@tdms.worcs.sch.uk

What is Early Help?

Early Help means providing support as soon as a problem appears, to stop it from getting worse. This could be at any point in a child's life, from birth to the teenage years.

Anyone can provide early help – you don't need to be an expert professional. Early help is not about passing the issue on to an expert, but thinking about what is the best support that can be provided or found.

We can provide effective support by:

- listening
- working with other people who could help
- finding out about specialist agencies who could help
- filling out an [Early Help Assessment](http://www.worcestershire.gov.uk/eha) <http://www.worcestershire.gov.uk/eha>
- contacting [Children's Social Care](#) if we think the problem is more serious

There is a lot of information and advice on the [Advice, Care, Health and Support pages](#) as well as detail of local services that can provide support for children, young people and families.

Download: [Worcestershire Safeguarding Children Board – Early Help Strategy 2017 to 2020](#)

Download: [Worcestershire Special Educational Needs and Disabilities \(SEND\) strategy](#)

The De Montfort School Early Help Provision

Everyone needs help at some time in their lives and therefore an ethos of early help is important for any school.

The coordinated TDMS offer of Early Help is outlined in the following diagram. We believe that early interventions for children or families, in many cases, will prevent children from experiencing harm.

All TDMS staff are aware of the school offer of early help. At all times, staff should consider if there is any offer of early help that we can make in order to help a child thrive.

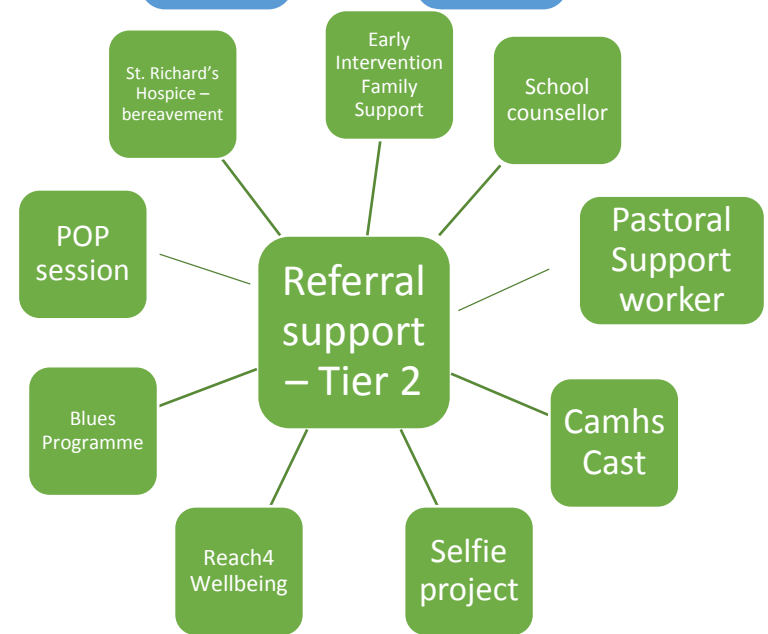
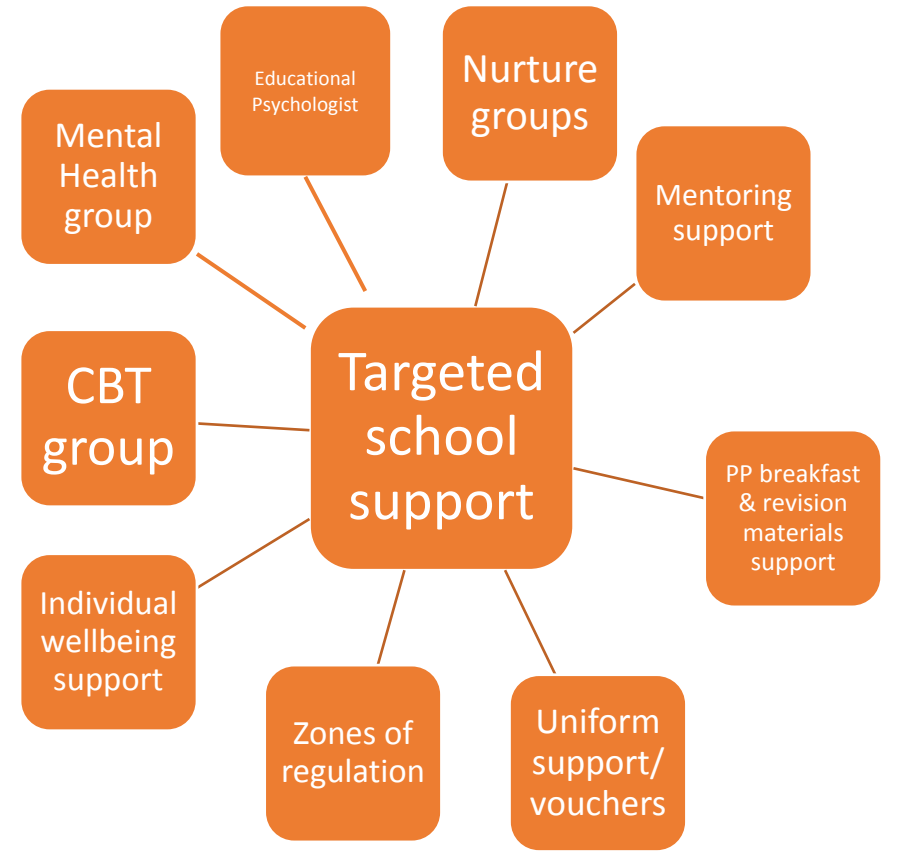
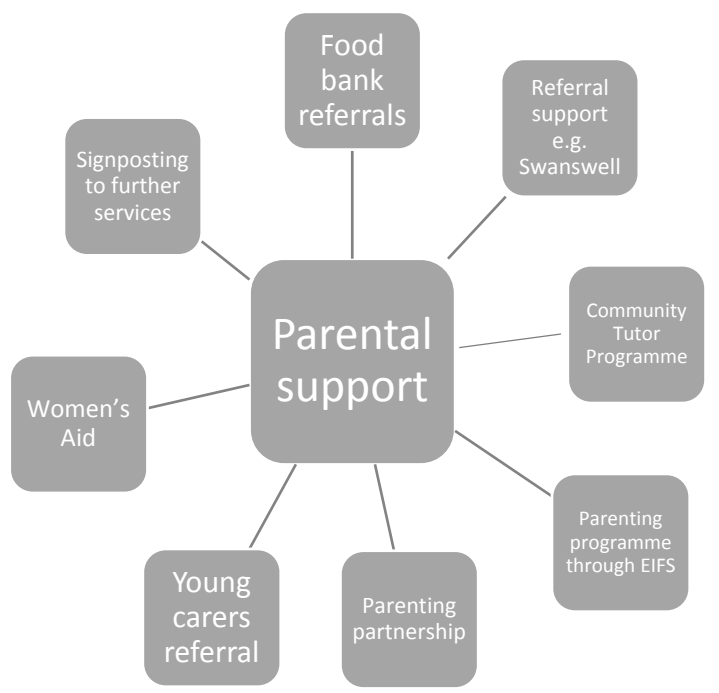
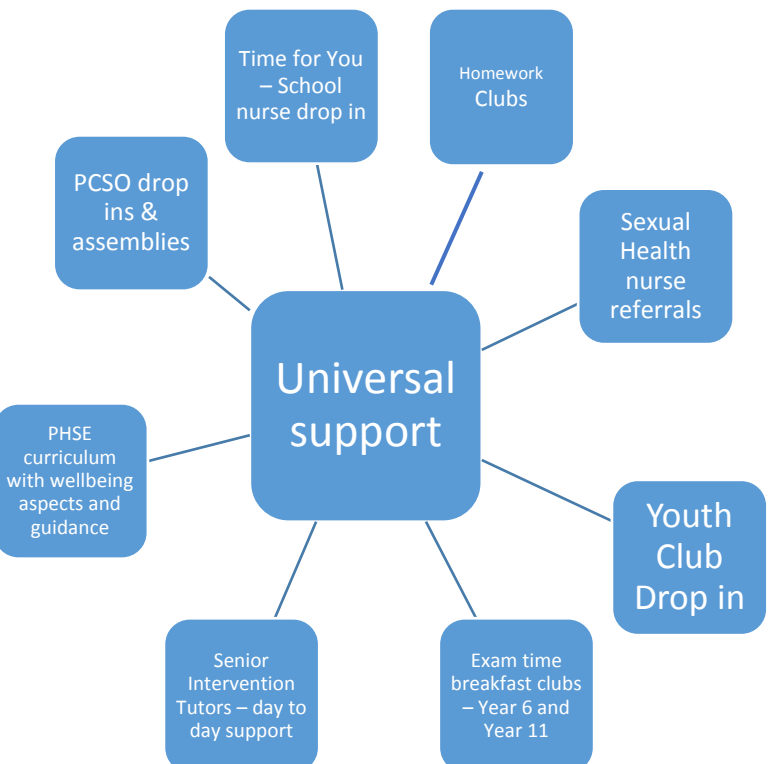
We also liaise with other agencies and people within the local community. In the table below are some National organisations that can support children, young people and their families.

At The De Montfort School we meet the needs of our children through a variety of ways:

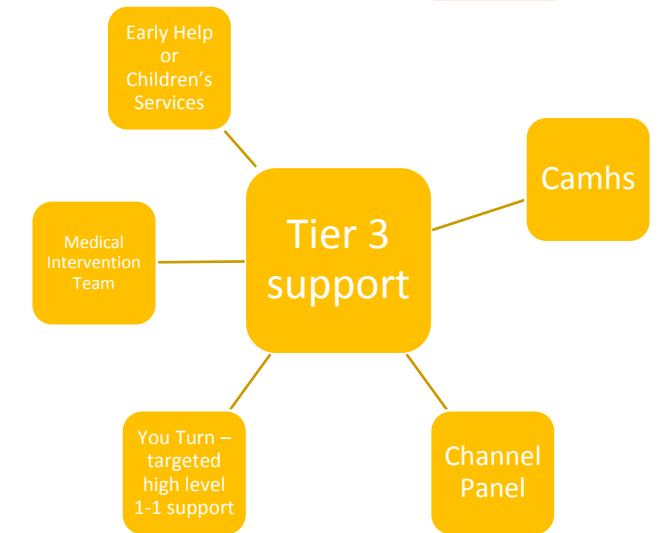
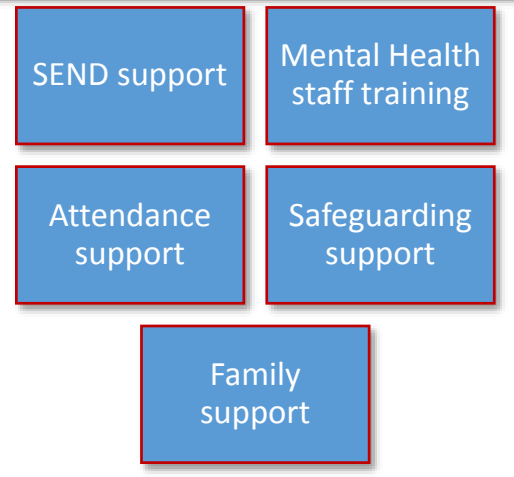
- By monitoring attendance
- Training staff
- Ensuring effective pastoral support
- Referring and taking appropriate action for students we deem at risk of FGM
- Referring on to agencies for further support
- Working in partnership with families

Any child may benefit from early help, but all school staff should be particularly alert to the potential need for early help for a child who:

- Is disabled and has specific additional needs;
- Has special educational needs (whether or not they have a statutory education, health care plan);
- Is a young carer;
- Is showing signs of being drawn in to anti-social or criminal behaviour, including gang involvement and association with organised crime groups;
- Is frequently missing/goes missing from care or from home;
- Is misusing drugs or alcohol themselves;
- Is at risk of modern slavery, trafficking or exploitation;
- Is in a family circumstance present challenges for the child; such as substance abuse, adult mental health problems or domestic abuse;
- Has returned home to their family from care;
- Is showing early signs of abuse and/or neglect;
- Is at risk of being radicalised or exploited;
- Is a privately fostered child.



The De Montfort School Early Help Provision



The De Montfort School Glossary Terms

EIFS – Early Intervention Family Support – Level 2 provision

Blue's Programme – Programme to support students with low mood

CAMHS – Child and Adolescent Mental Health Service

CAMHS CAST – service to provide advice if CAMHS service is declined

CBT – Cogitative behaviour therapy

CEOP – Child Exploitation and Online Protection Agency. Tasked with supporting children, parents and teachers with protecting children online.

Channel Panel – group that meets to discuss referrals of children that are at risk of radicalisation or extremism

Early Help – Targeted Family support at Tier 3 level

PCSO – Police Community Support Officer

PHSE – Personal Health and Social Education

PP – Pupil Premium

Reach 4 Wellbeing – programme to help children with anxiety issues

Selfie Project – programme to help children who are vulnerable to sexual exploitation or violence

Swanswell – Agency to support people with alcohol or substance abuse problems

Women's Aid – Agency which supports people with Domestic Abuse or Violence problems

Zones of Regulation – programme to support students in understanding and regulating their emotional behaviour

School training

Child Sexual Exploitation

All staff at The De Montfort School have been trained to identify early cases of child sexual exploitation. At school we use the CSE Screening tool if we have concerns. We provide guidance sessions to education students on the risks of CSE (age appropriate), work with the local Safe Schools CSO and provide further support through programmes such as the Selfie Project to reduce the risk.

Female Genital Mutilation

All staff have received training on FGM. Teachers know how to identify if a child may be at risk. They know the signs to look for and most importantly how to refer, following the schools safeguarding procedures.

Provision

At The De Montfort School we meet the needs of our children through a variety of ways:

- By monitoring attendance
- Training staff
- Ensuring effective pastoral support
- Referring and taking appropriate action for students we deem at risk of FGM

The De Montfort School

Early Help Provision – Universal Provision

<p>Worcestershire Children First (Worcestershire Safeguarding Children’s Board) website. http://www.worcestershire.gov.uk/safeguardingchildren Important information for parents and professionals across Worcestershire in relation to keeping children safe and avenues of support including early help options. Everyone should know how to access this website which has all of the agreed Worcestershire safeguarding and child protection processes on it.</p>	<p>Worcestershire Family Information Service (FIS) Worcestershire Family Information Service (FIS) advisors give impartial information on childcare, finances, parenting and education. FIS are a useful source of information for parents and professionals. They support families, children and young people aged 0-19 years of age (25 for young people with additional needs) and professionals working with these families. They can help link parents up with other organisations that might be able to help or provide the information themselves. http://www.worcestershire.gov.uk/info/20507/childcare/1579/family_information_service</p>	<p>Home-school support: Worcestershire Home Education Network Home education is becoming an increasingly popular option for families in Worcestershire and there is a growing community that are able to offer each other support. Members have years of experience in educating children of all ages and are able to organise and put on a range of activities. Contact through email: info@worcestershire-home-educators.co.uk</p>
<p>E-Safety This is the Child Exploitation and Online Protection (CEOP) Centre. E-safety (Online Safety) The use of technology has become a significant component of many safeguarding issues. Child sexual exploitation; radicalisation; sexual predation – technology often provides the platform that facilitates harm. PACE (parents against child exploitation) www.paceuk.info Child Exploitation and Online Protection (CEOP) Centre - https://www.thinkuknow.co.uk/parents http://educateagainsthate.com/ - This is the government website to help parents and professionals understand the risks of children and young people being radicalised by extremists online and how to keep children safe from this. www.internetmatters.org – A great site for helping parents keep their children safe online.</p>	<p>Mental Health NHS self-help guides can be accessed by typing the below link into your URL and selecting ‘Self Help Guides’: www.hacw.nhs.uk Staying Safe http://stayingsafe.net/ SANE 0845 767 800 Email: sanemail@org.uk www.sane.org Samaritans 116 123 (24 hour helpline) https://www.samaritans.org/</p>	<p>Rethink Mental Illness 0300 5000 927 www.rethink.org Mental Health Foundation www.mentalhealth.org.uk MIND 0300 123 3393 or text 86463 www.mind.org.uk Anxiety UK 08444 775 774 www.anxietyuk.org.uk</p>

The De Montfort School

Early Help Provision – Universal Provision

<p>Bullying and Cyberbullying Cyberbullying is using the internet, email, online games or any digital technology to threaten, tease, upset or humiliate someone else. If the police consider a message or post to be potentially criminal, they will take appropriate action. This could involve arresting the person responsible or interviewing them under caution. Cases involving sustained abuse or where someone's life is threatened will be treated seriously. The police will consider all of the circumstances when considering the best response to a report of cyber bullying. They will assess how vulnerable the victim is and what resources are required to trace the offender via social networking sites that often operate abroad and to different legislation. In certain cases it may be difficult to take action if the offender isn't in the UK. They will work with the victim to bring about the most suitable and proportionate conclusion, this will include alternative options that include the officer in the case using their discretion and working with the offender to record an apology to the victim.</p>	<p>Bullying and Cyberbullying Bullying UK Childline KidScape: Our resources provide information on issues surrounding bullying, online and personal safety. They can be used directly by young people and parents, as well as in the classroom within schools and youth organisations. https://www.kidscape.org.uk/resources-and-publications/</p>	<p>Hollie Guard-A new personal safety APP https://hollieguard.com/ Children & Teens Hollie Guard keeps your entire family safe. Keep an eye on your children while they're traveling to and from school with Journey. Teens can get help quickly while out with friends. Parents, guardians, and caregivers are automatically contacted by both SMS and email.</p>
<p>Hate Crime A hate crime is a criminal offense whose motivation can be shown to be race, national origin, religion or sexual orientation. A difference of race alone is NOT sufficient to make it a hate crime. West Mercia Police: Email: contactus@westmercia.police.uk Emergency number: 999 Non-Emergency number: 101 report online to True Vision (opens in a new window) https://educateagainsthate.com/parents/ Call in at your local police station</p>	<p>DDNs (Dangerous Drug Networks) DDN's are drug dealing gangs who target vulnerable people in order to set up drugs distribution networks. These criminals are using extreme violence to establish a presence, displacing an existing drug supply chain and intimidating rivals, witnesses and victims, this has resulted in local murders. DDN's exploit vulnerable teenagers to become drug runners for their network. Early intervention and intelligence are key to safeguard and protect the vulnerable. http://www.worcestershire.gov.uk/getsafe</p>	<p>Child Criminal Exploitation (County Lines) Children who are trafficked, exploited or coerced into committing crimes are victims in need of safeguarding and support. Though perceptions are altering these young people are still often criminalised and perceived as having 'made a choice' to take part in illegal activity. https://www.catch-22.org.uk/child-criminal-exploitation/ http://www.worcestershire.gov.uk/getsafe</p>

The De Montfort School

Early Help Provision – Universal Provision

<p>Child Sexual Exploitation (CSE)</p> <ul style="list-style-type: none"> • It affects both girls and boys and can happen in all communities. • Any young person can be targeted but there are some particularly vulnerable groups: Looked After Children, Children Leaving Care and Children with Disabilities. • Victims of CSE may also be trafficked (locally, nationally and internationally). • Over 70% of adults involved in prostitution were sexually exploited as children or teenagers. • Sexual violence or abuse against children represents a major public health and social welfare problem within UK society, affecting 16% of children under 16. That is approximately 2 million children. <p>Barnardo's Parents Against Child Sexual Exploitation page is the leading national charity working with parents and carers whose children are sexually exploited</p> <p>NSPCC definitions, statistics, facts and resources about CSE.</p>	<p>Domestic violence</p> <p>The school runs Operation Encompass – information is delivered the next day to schools about Domestic Abuse incidents in order for staff to support students.</p> <p>Help for victims can be gained from:</p> <p>West Mercia Women's Aid: 0800 980 3331 0800 783 1359</p> <p>helpline@westmerciawomensaid.org</p> <p>Groups for parents - information and guidance</p>	<p>Teenage relationship abuse</p> <p>Some children find it difficult to develop the right level of respect in relations with their peers. This can lead to dominant behaviour or even violence.</p> <p>Crush</p> <p>CRUSH is an awareness raising and support programme to help young people make safe and healthy relationships. The sessions are run in small groups and are specifically designed for 13-19 year olds.</p> <p>http://www.westmerciawomensaid.org/crush/</p>
<p>Faith abuse and Honour based violence</p> <p>Faith and belief-based child abuse, including practices around 'spirit possession' and 'witchcraft', is a hidden crime, which makes it difficult to quantify in terms of magnitude.</p> <p>Honour' based violence (HBV) occurs when perpetrators believe a relative or other individual has shamed or damaged a family's or community's 'honour' or reputation.</p> <p>The 'Honour Network Help line': 0800 5 999 247</p>	<p>Forced marriage</p> <p>UK Forced Marriage Unit fm@fco.gov.uk</p> <p>Telephone: 020 7008 0151</p> <p>Call 999 (police) in an emergency.</p> <p>www.gov.uk/stop-forced-marriage</p> <p>www.freedomcharity.org.uk</p>	<p>Gender-based violence/violence against women and girls</p> <p>For information about West Mercia Rape and Sexual Abuse visit: https://www.wmrsasc.org.uk/</p>

The De Montfort School

Early Help Provision – Universal Provision

<p>Gangs and youth violence</p> <p>This is a website for the Youth Violence Prevention Initiative: http://www.worcesterma.gov/youth-opportunities/youth-violence-prevention</p>	<p>Gender Identity Issues</p> <p>The Gender Trust is a listening ear, a caring support and an information centre for anyone with any question concerning their gender identity, or whose loved one is struggling with gender identity issues. People who might be Transgender, Transsexual or people who do not identify with the gender they were assigned at birth or those who are simply unsure. Address: 76 The Ridgeway, Astwood Bank, B96 6LX tel: 0845 231 0505</p> <p>www.gendertrust.org.uk</p>	<p>Private fostering</p> <p>National Fostering Agency (NFA) Call on: 0808 284 9226</p> <p>Kinship Care Kinship care means that relatives or friends look after children who cannot live with their parents. Visit this website for more information: http://www.worcestershire.gov.uk/privatefostering</p>
<p>Preventing Radicalisation and Extremism/HATE www.educateagainsthate.com is the government website providing information and practical advice for parents, teachers and schools leaders on protecting children from radicalisation and extremism. Anti-Terrorist Hotline: tel 0800 789 321 also be raised by email to the Home office: counter.extremism@education.gsi.gov.uk. An excellent website for parents: www.ltai.info/ as is www.preventtragedies.co.uk To help with understanding of extremist views.</p>	<p>Sexting/Sextortion/youth produced imagery</p> <p>http://www.nspcc.org.uk/preventing-abuse/keepingchildren-safe/sexting (NSPCC website).</p> <p>https://west-midlands.police.uk/your-options/sexting (West Mercia Police website)</p>	<p>Children Missing in Education (CME) Children Missing Education (CME) refers to 'any child of compulsory school age who is not registered at any formally approved education activity eg school, alternative provision, elective home education, and has been out of education provision for at least 4 weeks'. CME also includes those children who are missing (family whereabouts unknown), and are usually children who are registered on a school roll / alternative provision.</p> <p>http://www.worcestershire.gov.uk/info/20595/behaviour_and_attendance/293/children_missing_education</p>

The De Montfort School

Early Help Provision – Universal Provision

<p>Missing Children and Adults Strategy (vulnerable children and adults who go missing) Every year an estimated 200,000 people go missing in the UK. In some cases, missing adults may have made a choice to leave and ‘start their lives over again’, but the vast majority of missing people, children and adults, are vulnerable and need protection and support. https://www.gov.uk/government/publications/missing-children-and-adults-strategy</p>	<p>Children with family members in prison Approximately 200,000 children have a parent sent to prison each year. These children are at risk of poor outcomes including poverty, stigma, isolation and poor mental health. NICCO (www.nicco.org.uk) provides information to support professionals working with offenders and their children to help mitigate the negative consequences for these children.</p>	<p>Children and the court system Children are sometimes required to give evidence in courts, either for crimes committed against them or for crimes they have witnessed. There are two guides to support these children which can be found at www.gov.uk (young witness booklet for 5 to 11 year olds) which is a pdf. There is also a document called “going to court and being a witness age 12 to 17” Making family arrangements via court can be stressful and entrench conflict in families. The ministry of Justice has just launched an online dispute resolution service. This can be useful to parents and carers. Got to www.gov.uk and search for “get help with arrangements.”</p>
<p>Stalking If it doesn’t feel right it probably isn’t! Seek support from trusted family/friends Report to the police and do this early Keep a diary in a secure location Screenshot emails etc and save them Photograph/video your stalker if safely possible. Get advice: Hollie Gazzard Trust, Paladin etc... Tighten security; home, work and on-line National Stalking Helpline For advice and support. The helpline will operate a triage service for local support and make referrals -Phone: 0808 802 0300 Website: www.stalkinghelpline.org Email: advice@stalkinghelpline.org</p>	<p>Sexual violence and sexual harassment between children in schools and colleges West Mercia Rape and Sexual Abuse Support Centre: https://www.wmrsasc.org.uk/ 01905 724 514</p>	